

# NEW Improved Cordless Cleaning

## ProTeam GoFree® Flex Pro II

107644\* GoFree Flex Pro II 12 Ah w/ Xover® Telescoping Wand Tool Kit D (107100) **\$1,749**

107646\* GoFree Flex Pro II 6 Ah w/ Xover Telescoping Wand Tool Kit D (107100) **\$1,329**

With a high/low power switch and two battery options, the new GoFree Flex Pro II brings greater versatility and options to professional cleaners. By cleaning at a rate 30% faster than a corded backpack and 5x faster than an upright vacuum, the GoFree Flex Pro II will save time and money. Eliminate safety and tripping concerns when going cordless.



### TWO BATTERY OPTIONS



### HIGH/LOW POWER SWITCH



### LONG RUNTIME

## Specifications

Motor Airflow:	58 CFM (low)   65 CFM (high)
Static Lift:	67 in. (low)   81 in. (high)
Motor:	36 VDC/240 W (low)   345 W (high)
Decibel:	63.9 dBA (low)   65.9 dBA (high)
Capacity:	6 qt./6.6 L
Battery Type:	Lithium Ion
ProLevel Filtration® w/ Four Levels of Filtration:	1054 sq. in. total area

### \*\*ProLevel Filtration System with HEPA Media

captures 99.72% at 0.3-.5 microns per ASTM F3150

	6 Ah	12 Ah
Weight:	15.5 lbs./7 kg	17.5 lbs./7.9 kg
Approximate Runtime:	50 mins. (low) 35 mins. (high)	101 mins. (low) 73 mins. (high)
Approximate Full Charge Time:	1.5 hrs.	3 hrs.
Minimum Charge Cycles:	500	850

## Warranty

**6 Ah:** 3 years parts and labor, 2 years motor and charger, 1 year battery, Limited lifetime on molded body parts  
**12 Ah:** 3 years parts and labor, 2 years motor, battery and charger, Limited lifetime on molded body parts

## \*STANDARD CONFIGURATION

14" Xover Floor Tool	3" Dust Brush
Telescoping Wand	17" Crevice Tool
5" Upholstery Tool	

## RELATED PRODUCTS

107313	Intercept Micro Filters, 10/pk	\$20.80
107513	12 Ah Replacement Battery	999.00
107637	6 Ah Replacement Battery	619.00
107516	Battery Charger	210.94

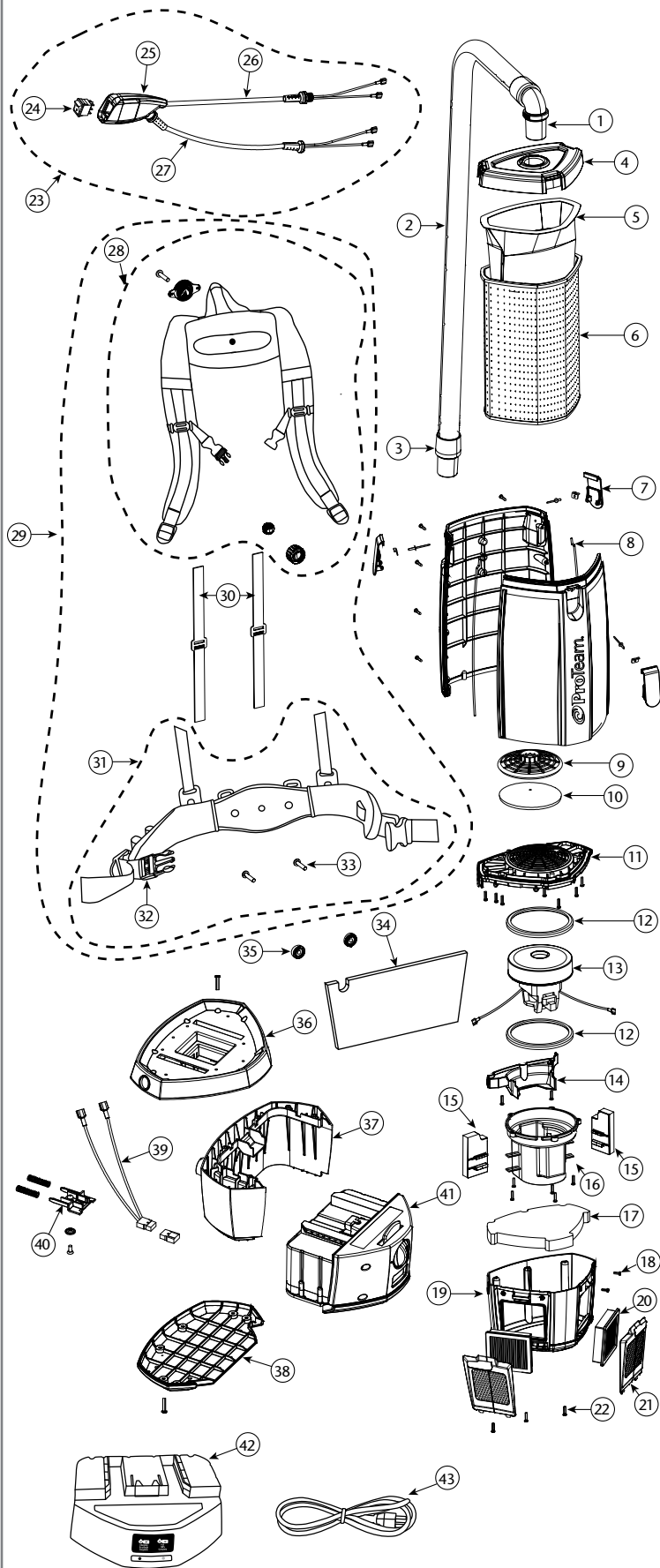
## OPTIONAL CONFIGURATIONS

107645	12 Ah w/ProBlade® Carpet and Hard Surface Floor Tool Kit (107532)	\$1,799
107650	12 Ah w/Xover Two-Piece Wand Tool Kit B (107098)	1,749
107647	6 Ah w/ProBlade Carpet and Hard Surface Floor Tool Kit (107532)	1,379
107651	6 Ah w/Xover Two-Piece Wand Tool Kit B (107098)	1,329

All vacuums purchased in kit configurations include battery and charger.

Specification calculations are based on average motor performance.

# GOFREE FLEX PRO II PARTS



No.	Product Name	Qty	List Price
1	101928 Replacement Double Swivel Elbow Cuff 1 1/2"	1 ea.	\$ 9.60
	102715 Replacement Double Swivel Elbow Cuff 1 1/4"	1 ea.	12.72
2	107648 48" Static-Dissipating Hose w/ Non-Replaceable Cuffs	1 ea.	29.04
	103237 56" Static-Dissipating Hose w/Cuffs (Black) 1 1/4"	1 ea.	27.75
3	100694 Replacement Swivel Cuff (Black) 1 1/2"	1 ea.	5.71
	103279 Replacement Swivel Cuff (Black) 1 1/4"	1 ea.	7.09
4	833948 Purple Cap	1 ea.	36.15
5	107314 Intercept Micro Filter (Open Collar)	10/pk	15.60
	107374 Intercept Micro Filter (Closed Collar)	10/pk	21.76
6	834072 Micro Cloth Filter	1 ea.	25.92
7	510179 Latch and Retainer w/Lock Nut & Screw	1 set	7.73
8	510181 Gasket for Tank	2 ea.	3.58
9	510183 Dome Filter w/Foam Media (includes: #10)	1 set	8.35
10	510184 Foam Filter Media for Dome Filter	1 ea.	2.53
11	510193 Upper Motor Support w/Gasket	1 set	5.88
12	510741 Motor Gasket (GFFP II only)	1 ea.	8.01
	840899 Motor Gasket (old)	1 ea.	6.78
13	510740 Motor/Fan (36VDC) w/Gasket (GFFP II only)	1 ea.	177.10
	510411 Motor/Fan (36VDC) w/Gasket (old)	1 ea.	155.82
14	510185 Cover Wire w/ 2 screws	1 set	2.71
15	510742 Left/Right Baffles	1 set	5.75
16	510194 Lower Motor Support (5 screws)	1 set	13.90
17	834042 Triangular Lower Foam Pad	1 ea.	3.06
18	808380-0 Screw Pan CR #8 x 1/2"	1 ea.	.90
19	510216 Housing Assembly Lower w/Screws	1 set	16.54
20	107315 Exhaust Filter made from HEPA Media (2 pk)	1 set	12.23
21	841708 Exhaust Filter Door w/ Latch	1 ea.	7.41
22	808380-22 Screw Pan CR #8 x 3/4"	1 ea.	1.11
23	843473 Switch Cord and Power Cord Assembly (includes: #24-27) (GFFP II only)	1 set	28.47
	834249 Switch Cord and Power Cord Assembly (includes: #24-27) (old)	1 set	59.11
24	106066 On/Off Switch	1 ea.	7.57
25	107043 Switch Box	1 set	18.67
26	843475 Switch Cord Assembly (GFFP II only)	1 set	7.09
	842021 Switch Cord Assembly (old)	1 set	8.59
27	841726 Battery Cord Assembly	1 set	9.86
28	840112 Upper Harness Assembly	1 set	74.81
29	840011 Harness Assembly Complete (includes: #28-37)	1 set	160.65
30	510192 Tensioning Straps	1 set	10.59
31	840114 Lower Harness Assembly (includes: #36, 37)	1 set	75.25
32	510301 Waist Belt Buckles and Straps Set	1 set	12.19
33	834051 5/16" - 18x1 - 3/8" Lock Screw (2 screws)	1 set	5.14
34	834043 Rectangular Upper Foam Pad	1 ea.	2.81
35	510186 Harness Spacers	2 ea.	3.26
36	510218 Upper Battery Housing	1 ea.	17.33
37	510217 Lower Battery Housing	1 ea.	17.02
38	510219 Battery Support	1 ea.	19.40
39	510220 Lead Assembly w/Screw	1 ea.	10.12
40	510221 Actuator w/Washer, Screw, Springs	1 set	8.73
41	107513 12 Ah Battery	1 ea.	999.00
	107637 6 Ah Battery	1 ea.	619.00
42	107516 Battery Charger and Charger Cord (includes: #47)	1 set	210.94
43	834678 Charger Cord	1 ea.	27.40